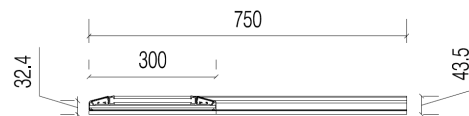


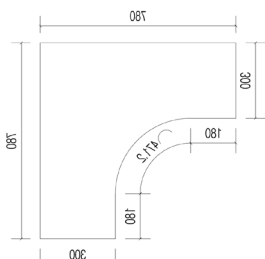
CompoSe 300L90



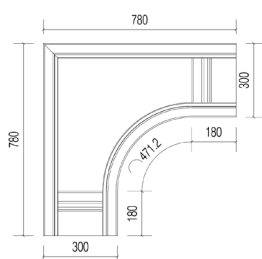
CompoSe 300L90 - 90 degree, L shaped LED based modular intelligent luminaire. Intended for use as a module in a CompoSe 300 array, or as an individual luminaire when fully framed. Direct and Direct/Indirect light distribution options: '1Way' and '2Way'. 'Frameless' panel design with a 'floating' 8mm Satin high-grade acrylic diffuser panel.



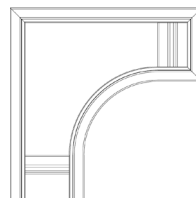
Side Elevation



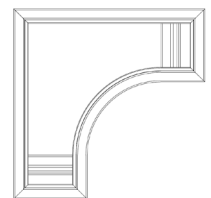
Front Elevation



Rear Elevation - open ends - OO



Rear Elevation - one end framed - OF



Rear Elevation - fully framed - FF

Applications

Ceiling suspended as part of a CompoSe 300 ceiling feature
Ceiling suspended as an individual luminaire

Wall mounted as part of a CompoSe 300 wall feature
Wall mounted as an individual luminaire

Size Options

CompoSe 300 L90 - 300mm wide x 32mm visible edge. Standard dimensions as per drawing. Custom panel sizes to minimise joints can be manufactured on a project-to-project basis - maximum overall module size must fit within a 1200x2400mm rectangle. CompoSe L90 is also available in 450 and 600mm widths. Custom widths up to 600mm - on request.

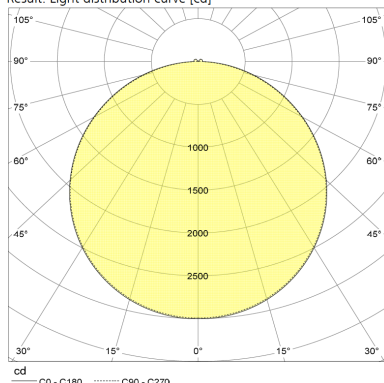
LED Options

CCT Standard White - 2700K, 3000K, 4000K, 5000K, 6500K / **Tunable White** - 2200K to 6500K / **RGB** - fully dynamic.
CRI 80 / CRI 90 optional for 2700K, 3000K, 4000K

Light Performance

'1Way'

Result: Light distribution curve [cd]

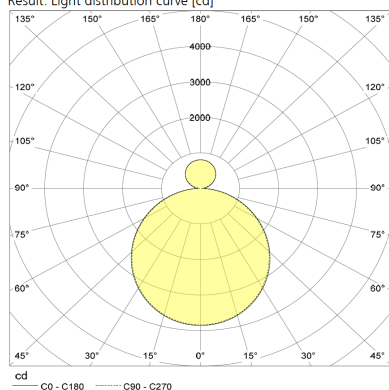


| CompoSe 300L90 | | Luminaire | |
|----------------|------------|-----------|----------|
| CCT | | Flux | Efficacy |
| White | 2700K | 8119lm | 65lm/W |
| | 3000K | 8581lm | 69lm/W |
| | 4000K | 9227lm | 74lm/W |
| | 5000K | 9227lm | 74lm/W |
| | 6500K | 9227lm | 74lm/W |
| Tunable White | 2200-6500K | 6636lm | 64lm/W |

Tunable White: normalised output
CRI: 80. CRI 90 optional for 2700K, 3000K, 4000K
Luminaire input power: 125W for white, 104W for TW
Standby power: 0.5 W
Rated median useful life: 100,000h L80 at 25C
Colour tolerance: MacAdam 3

'2Way'

Result: Light distribution curve [cd]



| CompoSe 300L90 | | Luminair | |
|----------------|------------|----------|----------|
| CCT | | Flux | Efficacy |
| White | 2700 K | 7835lm | 63lm/W |
| | 3000K | 8281lm | 66lm/W |
| | 4000K | 8904lm | 72lm/W |
| | 5000K | 8904lm | 72lm/W |
| | 6500K | 8904lm | 72lm/W |
| Tuneable White | 2200-6500K | 6404lm | 62lm/W |

Tuneable White: normalised output

CRI: 80. CRI 90 optional for 2700K, 3000K, 4000K

Luminair input power: 125W for white, 104W for TW

Standby power: 0,5 W

Rated median useful life: 100.000h L80 at 25C

Colour tolerance: MacAdam 3

Design Options

Standard front panel design - 8mm Satin high-grade acrylic diffuser panel.

Design Options: **Printed** - Custom print design, digitally applied to individual panels or over multiple panels
Etched - Custom etch design, digitally laser-etched on individual panels or over multiple panels. This option shows an 8mm visible frame.

Control

Individually Intelligent Panel - integrated DALI LED driver (type DT6 or DT8) for calibration, dimming and colour control. Electronic Panel Connector to feed and control up to 5 lm. CompoSe panels with only 1 Power/DALI cable. Full range of fixed and wireless panel control options. Panels can be controlled individually, in groups or multiple groups. Remote programming and monitoring. Supports DALI daylight, motion sensors etc.

Properties

'Frameless' panel design as a result of a proprietary 'diffuser-to-frame' fixing system. Liquid Nitrogen extruded, high quality aluminium profiles, for best possible natural anodised finish. Flat luminair with 32mm visible edge. Frameless panel ends with connectors where panels connect in a CompoSe array, to ensure optimised panel joint experience. High-grade 8mm Satin PMMA (acrylic) diffuser for optimised light distribution and glare control. 48V LED system with integrated DALI LED driver, Electronic Panel Connector and a connected decorative 4-core power lead. Ceiling Suspended with a 1,5mm dia wire suspension system or Wall Mount with proprietary wall bracket system.